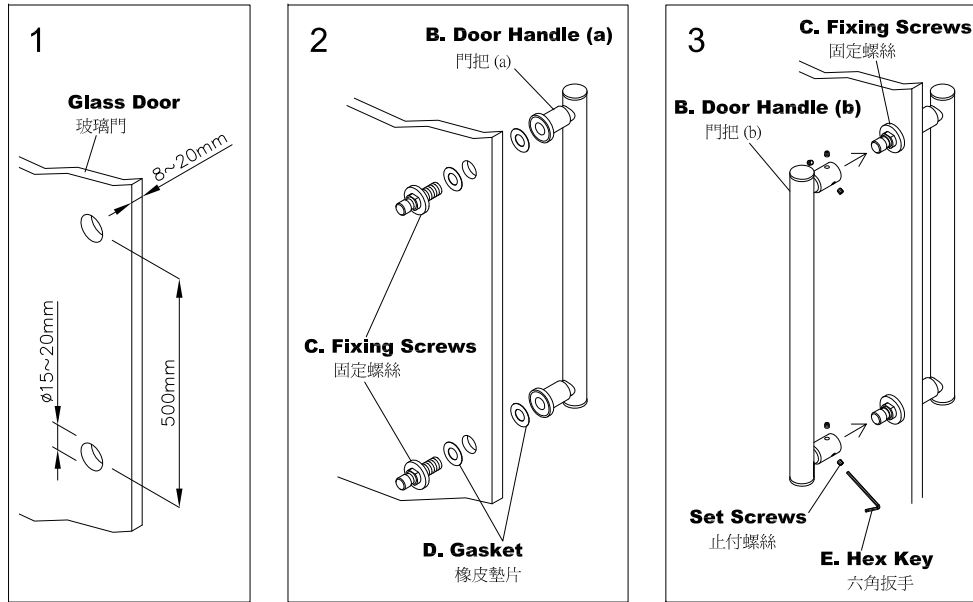


INSTALLATION INSTRUCTIONS

Door Handles (50cm) 雙把門把安裝說明



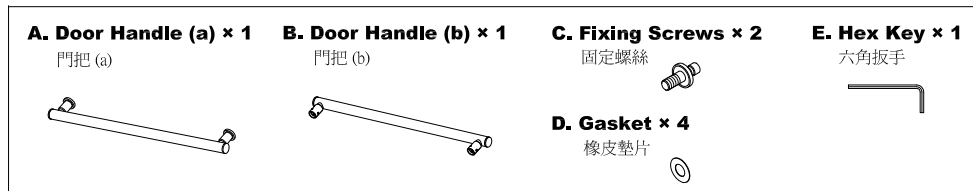
NOTE: Glass door install support holes as needed as fig.1 shown.

注意：請於安裝前先確認玻璃厚度為8~20mm，玻璃鑽孔的位置與大小如圖一所示。

1. Installing **Door Handle (b)** as fig.2 shown first, then secure **Fixing Screws** with 14 mm wrench.
先如圖2所示，安裝門把(a)，然後使用14mm開口扳手將固定螺絲鎖緊。
2. Using **Hex Key** provided to loosen the set screws on **Door Handle (b)** for installation.
安裝之前，使用隨附的六角扳手將止付螺絲從門把(b)鬆開。
3. Slide **Door Handle (b)** onto **Fixing Screws** as fig.3 shown, secure and tighten all the set screws.
如圖3，將門把(b)滑入固定螺絲，並將所有的止付螺絲鎖緊。

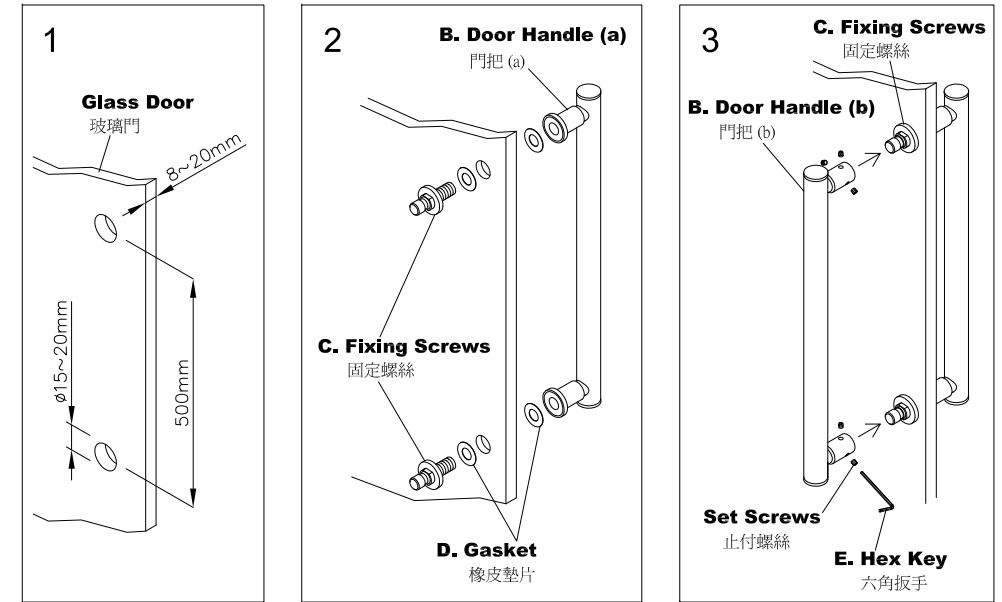
FIXING CONTENTS

組配件內容



INSTALLATION INSTRUCTIONS

Door Handles (50cm) 雙把門把安裝說明



NOTE: Glass door install support holes as needed as fig.1 shown.

注意：請於安裝前先確認玻璃厚度為8~20mm，玻璃鑽孔的位置與大小如圖一所示。

1. Installing **Door Handle (b)** as fig.2 shown first, then secure **Fixing Screws** with 14 mm wrench.
先如圖2所示，安裝門把(a)，然後使用14mm開口扳手將固定螺絲鎖緊。
2. Using **Hex Key** provided to loosen the set screws on **Door Handle (b)** for installation.
安裝之前，使用隨附的六角扳手將止付螺絲從門把(b)鬆開。
3. Slide **Door Handle (b)** onto **Fixing Screws** as fig.3 shown, secure and tighten all the set screws.
如圖3，將門把(b)滑入固定螺絲，並將所有的止付螺絲鎖緊。

FIXING CONTENTS

組配件內容

