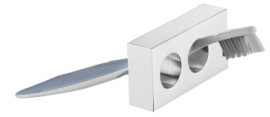


## Tooth Brush Holder 6908-35-80CP

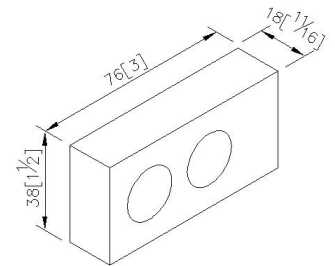
### INTRODUCTION:

Elongated cuboids become the main design of body, symmetrical lines bring out the harmony of beauty and the simple visualization.



### DESCRIPTION:

- 1.Brass tooth brush holder meets JIS 3604 standard.
- 2.Justime finishes resist corrosion and tarnish.
- 3.Chrome plated finish meets the standard of ASTM-SC2.
- 4.Vertical force could support a static load of 2 Kgf.
- 5.Coordinates with other products in 6908 collection.



unit: mm[inch]

### Certificaion:

### Fixing Kits:

- 1.SUS 304 Stainless Steel Screws\*2
- Hex Key 2.5mm\*1  
Mounting Bracket\*1  
Plastic Anchors\*2

### AWARD: