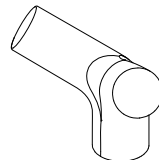


# INSTALLATION INSTRUCTIONS

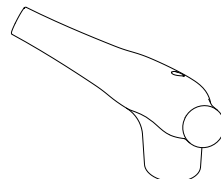
## 安裝說明

1. Select a proper position for product and use the **Bracket** as a template to mark centers of mounting holes on wall horizontally as figures shown.  
選取預定安裝的位置，以固定基座比對鑽孔的距離，並在牆壁畫上預定鑽孔記號，且確認鑽孔位置在同一水平線上。
2. Using a 6mm drill-bit, drill the holes in marked positions to a depth of 4cm. Insert the **Plastic Anchors** into the holes, and then fix **Bracket** with **Wall Screws**.  
當安裝在水泥牆時，使用6mm鑽頭，鑽孔深度4公分，填入塑膠塞並使之齊平於牆面，將固定基座以螺絲鎖緊於牆上。
3. Tightly fix **Main Body** on **Bracket** with **Set Screw**.  
使本體順利套進固定基座後，用隨附六角扳手鎖緊本體上方的固定螺絲，完成安裝程序。

SERIES:



**7875-52**  
Hook (Double)



**6927-52**  
Hook (Double)

