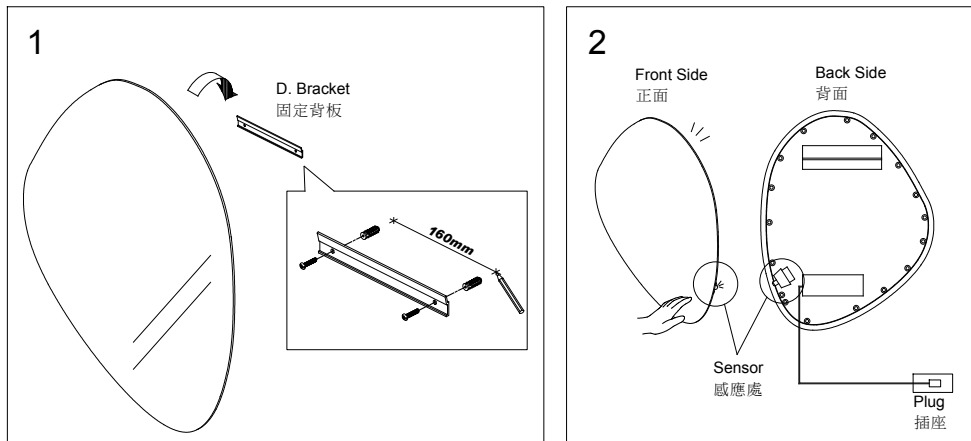


INSTALLATION INSTRUCTIONS

MIRROR

鏡子組



1. Draw a horizontal line on appropriate position by a spirit level and mark 2 drilling positions by hole centers of bracket with 160mm on line.

在適當位置用水平尺化一橫線，用背板標出中心距離160MM的兩個鑽孔位置點。

2. Drill the holes in marked positions by a 1/4 inch drill-bit to a depth of 50mm.

當安裝在水泥牆時，使用1/4英寸鑽頭，鑽孔深度5公分。

3. Fix Bracket on wall and check level before hang the Mirror on Bracket.

安裝背板固定，並確認水平後將鏡子平掛於固定背板上。

4. Plug in power supply (available for 100~240V), and operate by Sensor.

插上電源(全電壓)，將手靠近感應處即可發亮。

FIXING CONTENTS

組配件內容

