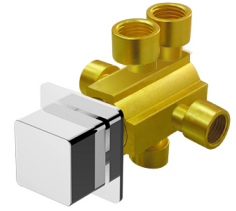


3-Way Diverter (Two Inlets)  
7909-W3-80CP

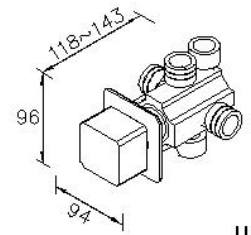
**INTRODUCTION:**

Designed main body style as square shape, the aesthetics of symmetry exudes a stylish and charming atmosphere. With R angle processed, it softens the right angle of hard steel, and brings more soft and elegant atmosphere to a bathroom space.



**DESCRIPTION:**

1. Casting valve body material meets ISO CuZn40Pb standard.
2. Forging handle material meets JIS 3771 Standard.
3. Water flow could be diverted to 3 water outlets.
4. The body of valve should be buried in the wall beforehand with 1"(2.5cm) adjusting tolerance in depth.
5. Chrome plated finish has met the ASTM-SC2 standard.
6. The connecting thread of main body is G 1/2.



unit:mm

**Certification:**

**Fixing Kits:**

- 1.

**AWARD:**