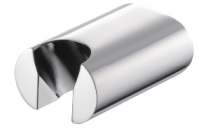


Adjustable Shower Holder
7920-9C-80CP

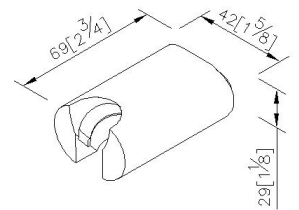
INTRODUCTION:

Hand shower bracket with adjustable angle for 5 levels and 10 degrees for each level, which could be modulated according to the demand. The intimate design brings a comfortable and enjoyable showertime for everyone.



DESCRIPTION:

- 1.Users could adjust the hanging angle for 5 levels,10 degrees for each level.
- 2.The body of shower holder is attached with plastic lining, which could keep the shower holder from falling off.
- 3.Easy installation and the product is without any seam.
- 4.Past 20,000 cycles lifespan test.
- 5.Chrome plated finish meets the standard of ASTM-SC2.
- 6.Main body brass material meets JIS 3604 standard.



Certification:

unit: mm[inch]

Fixing Kits:

- SUS 304 Stainless Steel Screws*2
- Hex Key 3.0mm*1
- Plastic Anchors*2

AWARD: